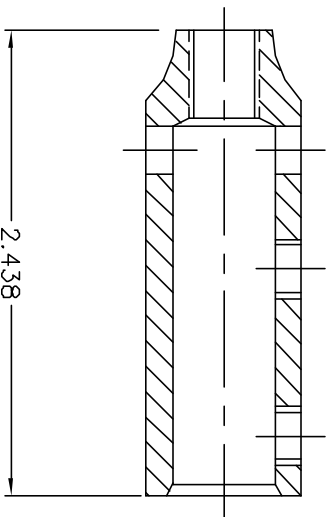


ASSEMBLY



APPROVED

AS DRAWN: _____
 AS NOTED: _____
 DATE: _____

THIS DOCUMENT AND THE CONTENTS THEREOF IS THE PROPERTY OF HARGER INC., AND IS FURNISHED TO YOU FOR INFORMATION ONLY. THE INFORMATION CONTAINED HEREIN IS CONFIDENTIAL AND OF A PROPRIETARY NATURE AND MUST NOT BE DISCLOSED TO THIRD PARTIES WITHOUT THE EXPRESS WRITTEN APPROVAL OF HARGER INC.

C	ADDED PRODUCTION NOTE	0914406	DVB
B	ADDED PACKAGE NOTE	101601	EHS
A	ADDED BOM	011100	KAB
LET	REVISION	DATE	BY
TOLERANCES UNLESS NOTED:			
	FRACTIONAL	+/-	1/64
	.00	+/-	.010
	.000	+/-	.005

PART NO. 157
 3/8" VERTICAL CONNECTOR

DRAWN BY:	LAL
CHECKED BY:	LAL
DATE:	07/28/97
 301 ZIEGLER DRIVE GRAYS LAKE, IL 60030 (847) 548-8700	
REVISION:	C
SCALE:	FULL
SHEET:	1 OF 1