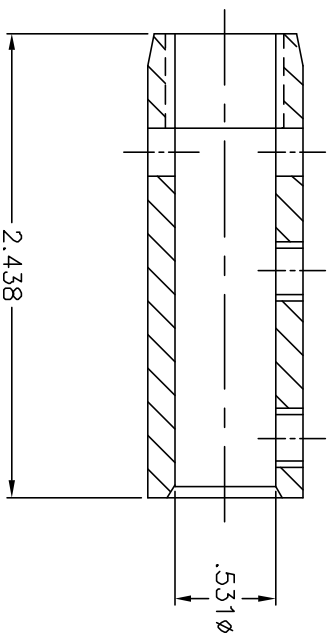


ASSEMBLY



**5/8" TINNED BRASS VERTICAL BASE CONNECTOR**

EST. WEIGHT 0.26 LBS

**APPROVED**

**PART NO. 158-5/8T**  
5/8" TINNED VERTICAL CONNECTOR

AS DRAWN: \_\_\_\_\_  
 AS NOTED: \_\_\_\_\_  
 DATE: \_\_\_\_\_

THIS DOCUMENT AND THE CONTENTS THEREOF IS THE PROPERTY OF HARGER INC., AND IS FURNISHED TO YOU FOR INFORMATION ONLY. THE INFORMATION CONTAINED HEREIN IS CONFIDENTIAL AND OF A PROPRIETARY NATURE AND MUST NOT BE DISCLOSED TO THIRD PARTIES WITHOUT THE EXPRESS WRITTEN APPROVAL OF HARGER INC.

LET	ADDED BOM	REVISION	DATE	BY
A			011100	KAB
TOLERANCES UNLESS NOTED: FRACTIONAL +/- 1/64 +/- .010 +/- .005				

DRAWN BY: LAL	CHECKED BY: -	DATE: 101899
REVISION: A	SCALE: FULL	SHEET: 1 OF 1

