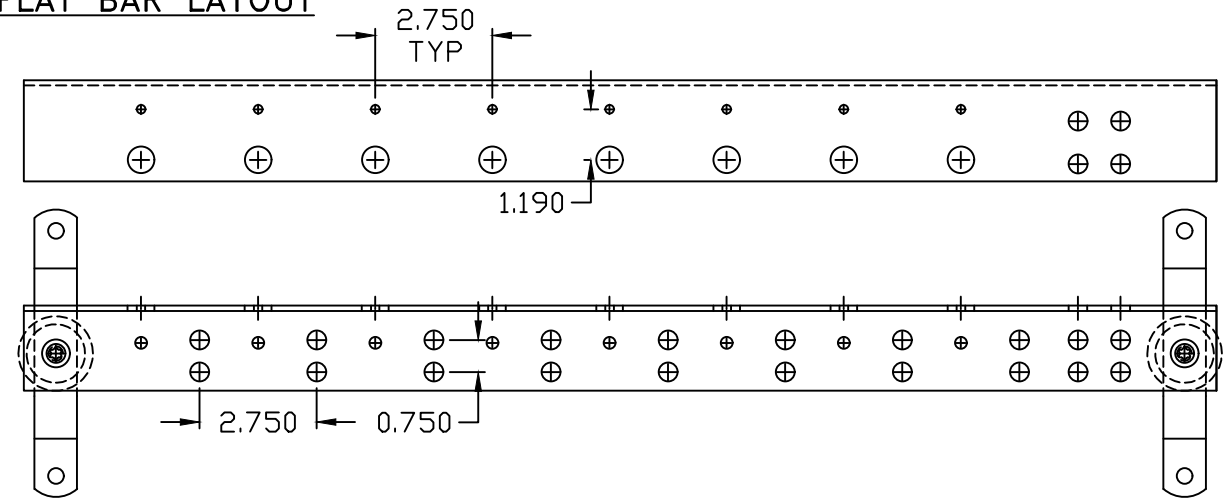
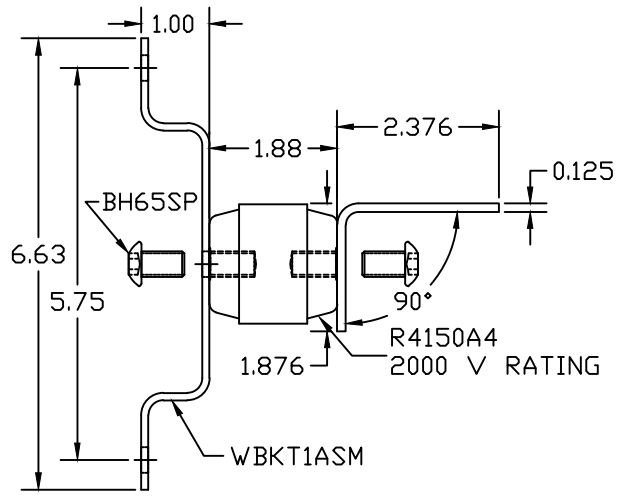


FLAT BAR LAYOUT



BENT GROUND BAR ASSEMBLY



SIMILAR TO BGBI14428TEL
EST. WEIGHT 5.37 LBS

APPROVED

THIS DOCUMENT AND THE CONTENTS THEREOF IS THE PROPERTY OF HARGER INC., AND IS FURNISHED TO YOU FOR INFORMATION ONLY. THE INFORMATION CONTAINED HEREIN IS CONFIDENTIAL AND OF A PROPRIETARY NATURE AND MUST NOT BE DISCLOSED TO THIRD PARTIES WITHOUT THE EXPRESS WRITTEN APPROVAL OF HARGER INC.

AS DRAWN: _____
 AS NOTED: _____
 DATE: _____

A	ADDED 4 HOLES	092199	KAB
LET	REVISION	DATE	BY
TOLERANCES UNLESS NOTED:		3RD ANGLE PROJECTION	
FRACTIONAL	+/- 1/16		
DECIMAL	+/- .030		
BREAK SHARP EDGES			

PART NO. BGBI18428TEL
 CU BENT GROUND BAR ASSEMBLY
 TELIGENT

DRAWN BY:
KAB
 CHECKED BY:
 -
 DATE:
 060799



301 ZIEGLER DRIVE
 GRAYSLAKE, IL 60030
 (847) 548-8700

REVISION:
 A
 SCALE:
 7/32
 SHEET:
 1 OF 1