

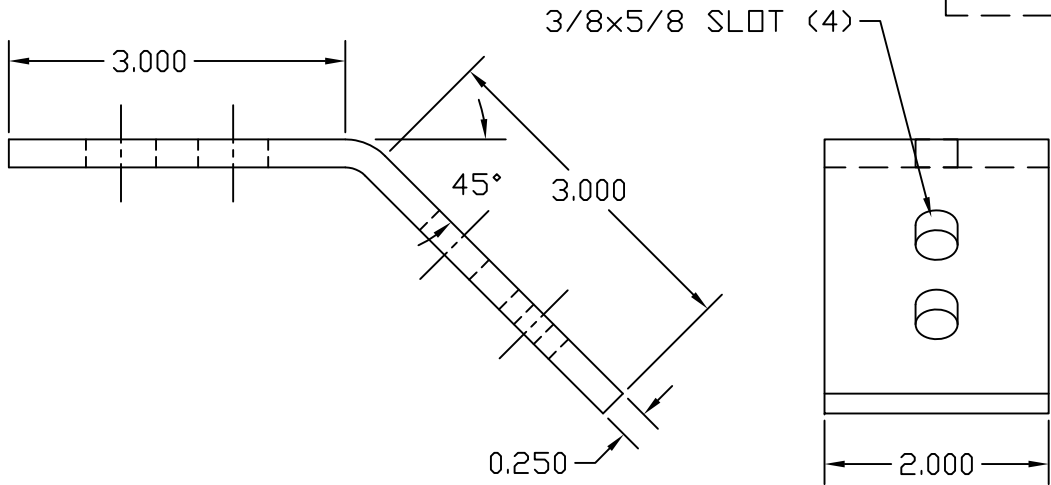
3/8 S.S.  
FLAT WASHER

3/8x1 S.S.  
HEX BOLT

3/8 S.S.  
HEX NUT

3/8 S.S.  
LOCK WASHER

POLY-BAG



CU ELBOW 45°

EST. WEIGHT 1.14 LBS

APPROVED

AS DRAWN: \_\_\_\_\_  
 AS NOTED: \_\_\_\_\_  
 DATE: \_\_\_\_\_

THIS DOCUMENT AND THE CONTENTS THEREOF IS THE PROPERTY OF HARGER INC., AND IS FURNISHED TO YOU FOR INFORMATION ONLY. THE INFORMATION CONTAINED HEREIN IS CONFIDENTIAL AND OF A PROPRIETARY NATURE AND MUST NOT BE DISCLOSED TO THIRD PARTIES WITHOUT THE EXPRESS WRITTEN APPROVAL OF HARGER INC.

LET	REVISION	DATE	BY

**PART NO. CU142EL45KIT**  
 COPPER GROUND BUS ELBOW KIT

DRAWN BY:  
LAL  
 CHECKED BY:  
-  
 DATE:  
070210



301 ZIEGLER DRIVE  
 GRAYSLAKE, IL 60030  
 (847) 548-8700

REVISION:  
-  
 SCALE:  
1/2  
 SHEET:  
1 OF 1

