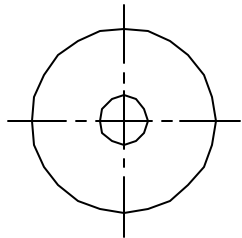
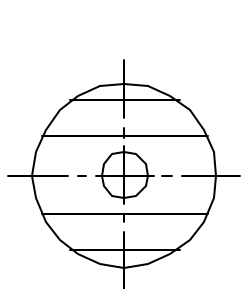
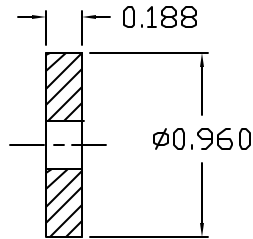


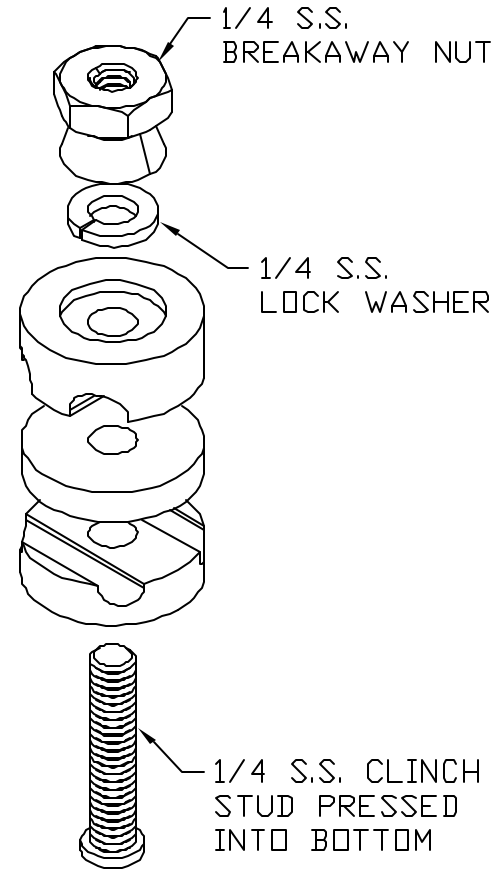
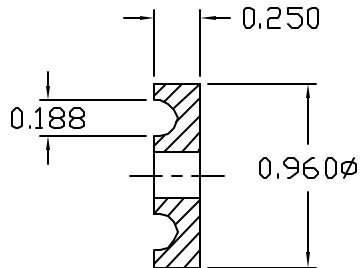
**TOP  
TIN PLATED  
BRASS**



**MIDDLE  
TIN PLATED  
BRASS**



**BOTTOM  
TIN PLATED  
BRASS**



**ASSEMBLY**

EST WT 0.2#

**APPROVED**

THIS DOCUMENT AND THE CONTENTS THEREOF IS THE PROPERTY OF HARGER INC., AND IS FURNISHED TO YOU FOR INFORMATION ONLY. THE INFORMATION CONTAINED HEREIN IS CONFIDENTIAL AND OF A PROPRIETARY NATURE AND MUST NOT BE DISCLOSED TO THIRD PARTIES WITHOUT THE EXPRESS WRITTEN APPROVAL OF HARGER INC.

AS DRAWN: \_\_\_\_\_  
 AS NOTED: \_\_\_\_\_  
 DATE: \_\_\_\_\_

LET	REVISION	DATE	BY

TOLERANCES UNLESS NOTED:  
 FRACTIONAL +/- 1/64  
 .00 +/- .010  
 .000 +/- .005

**PART NO. FGC4TP**  
 FENCE GROUND CLAMP  
 #4 WIRE

DRAWN BY:  
 LAL

CHECKED BY:

DATE:  
 040611



301 ZIEGLER DRIVE  
 GRAYSLAKE, IL 60030  
 (847) 548-8700

REVISION:  
 -  
 SCALE:  
 FULL  
 SHEET:  
 1 OF 1