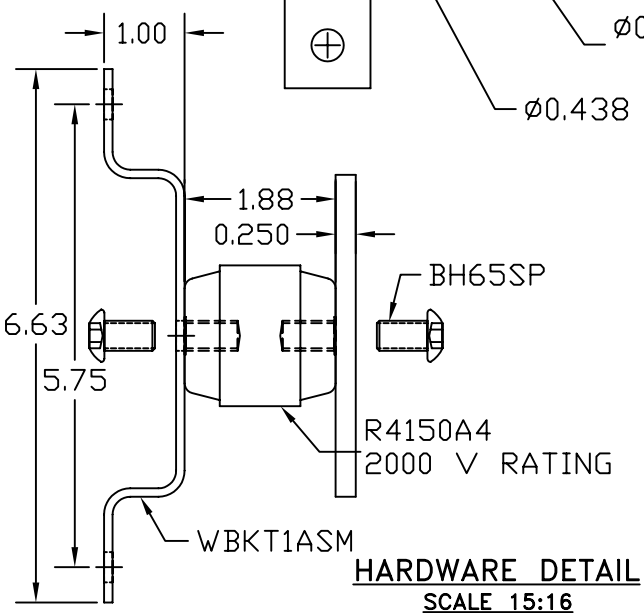


**GROUND BAR ASSEMBLY**



EST. WEIGHT 6.06 LBS

**APPROVED**

AS DRAWN: \_\_\_\_\_  
 AS NOTED: \_\_\_\_\_  
 DATE: \_\_\_\_\_

THIS DOCUMENT AND THE CONTENTS THEREOF IS THE PROPERTY OF HARGER INC., AND IS FURNISHED TO YOU FOR INFORMATION ONLY. THE INFORMATION CONTAINED HEREIN IS CONFIDENTIAL AND OF A PROPRIETARY NATURE AND MUST NOT BE DISCLOSED TO THIRD PARTIES WITHOUT THE EXPRESS WRITTEN APPROVAL OF HARGER INC.

B	BH65SP WAS CS66S, LW6S, W6S	031108	DVB
A	WERE #0.375 HOLES & #0.375X0.687 SLOTS	091703	EHS
LET	REVISION	DATE	BY
TOLERANCES UNLESS NOTED:		3RD ANGLE PROJECTION	
FRACTIONAL	+/- 1/16		
.00	+/- .030		
.000	+/- .010		

**PART NO. GBI14420M**  
 CU GROUND BAR ASSEMBLY

DRAWN BY:  
LAL  
 CHECKED BY:  
-  
 DATE:  
031201

**HARGER™**  
 301 ZIEGLER DRIVE  
 GRAYSLAKE, IL 60030  
 (847) 548-8700

REVISION:  
B  
 SCALE:  
7/16  
 SHEET:  
1 OF 1