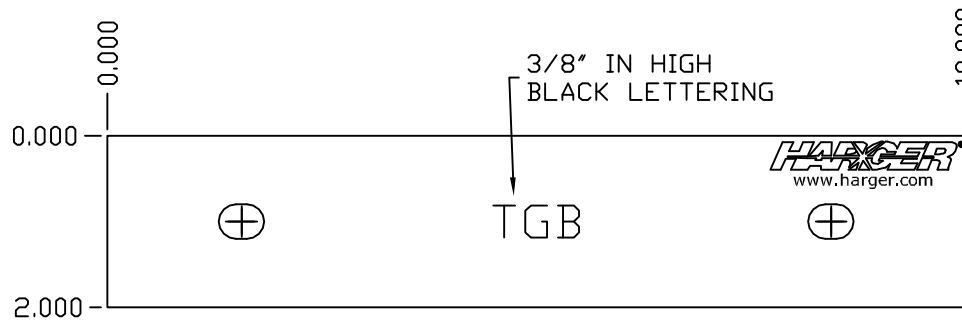
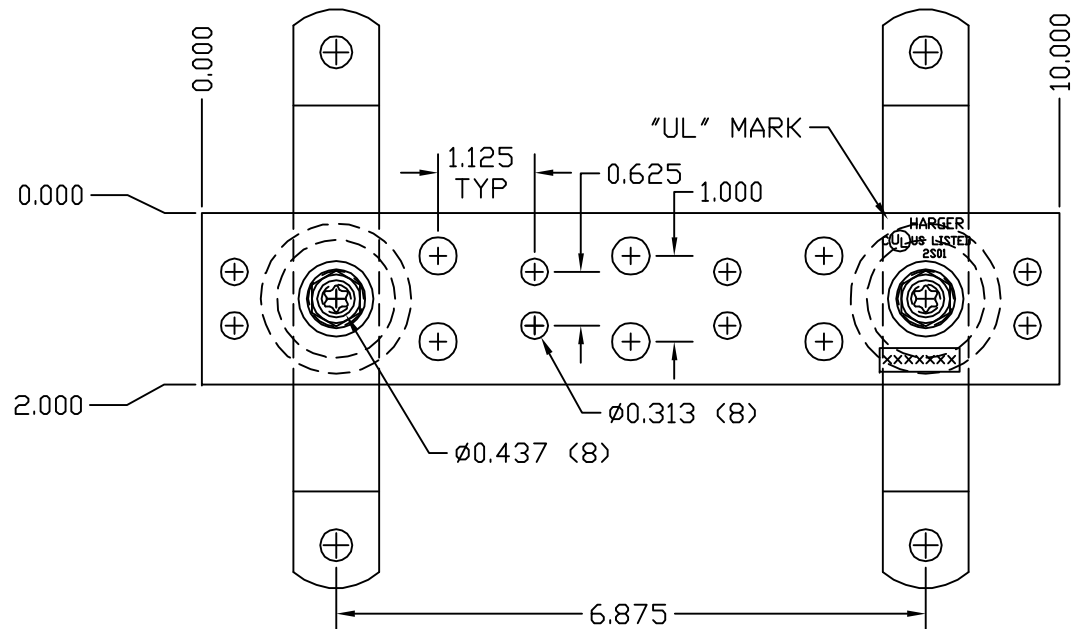
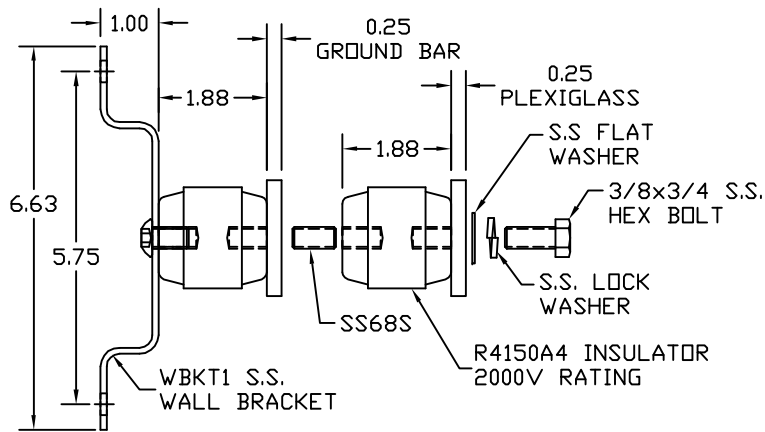


HCAJC1/2



CLEAR PLASTIC COVER



BISCI COPPER GROUND BAR ASSEMBLY

EST WT 3.43#

APPROVED

AS DRAWN: _____
 AS NOTED: _____
 DATE: _____

THIS DOCUMENT AND THE CONTENTS THEREOF IS THE PROPERTY OF HARGER INC., AND IS FURNISHED TO YOU FOR INFORMATION ONLY. THE INFORMATION CONTAINED HEREIN IS CONFIDENTIAL AND OF A PROPRIETARY NATURE AND MUST NOT BE DISCLOSED TO THIRD PARTIES WITHOUT THE EXPRESS WRITTEN APPROVAL OF HARGER INC.

LET	REVISION	DATE	BY
-	-	-	-
TOLERANCES UNLESS NOTED: FRACTIONAL +/- 1/16 DECIMAL +/- .030 BREAK SHARP EDGES			
3RD ANGLE PROJECTION			

PART NO. GBIP14210TGB
 GROUND BAR ASSEMBLY W/ COVER

DRAWN BY:
 DVVBV
 CHECKED BY:
 DATE:
 111208



301 ZIEGLER DRIVE
 GRAYSLAKE, IL 60030
 (847) 548-8700

REVISION:
 -
 SCALE:
 7/16
 SHEET:
 1 OF 1