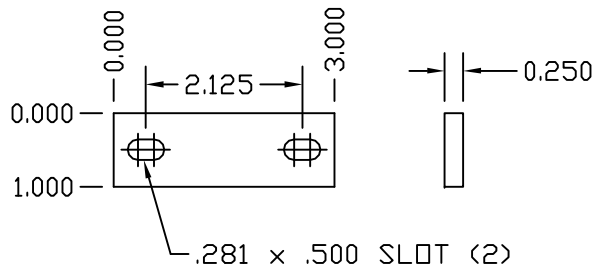
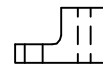


**COPPER RACK GROUND BAR**



**SPLICE PLATE**



**11/16WINS (2)**



**SMS0126SHWZ (2)**

- KIT INCLUDES:**
- (2)-12-24 X 3/4" CU. MACHINE SCREW
  - (2)-#12 CU. FLAT WASHER
  - (8)-#6-32 X 1/4" CU. MACHINE SCREW
  - (8)-#6 RING TERMINAL

**HWKITPTS (1)**

**COPPER RACK GROUND BAR KIT**

EST WT 3#

**APPROVED**

AS DRAWN: \_\_\_\_\_  
 AS NOTED: \_\_\_\_\_  
 DATE: \_\_\_\_\_

THIS DOCUMENT AND THE CONTENTS THEREOF IS THE PROPERTY OF HARGER INC., AND IS FURNISHED TO YOU FOR INFORMATION ONLY. THE INFORMATION CONTAINED HEREIN IS CONFIDENTIAL AND OF A PROPRIETARY NATURE AND MUST NOT BE DISCLOSED TO THIRD PARTIES WITHOUT THE EXPRESS WRITTEN APPROVAL OF HARGER INC.

E	ADD SPLICE PLATE SANDING NOTES	042604	WSM
LET	REVISION	DATE	BY
TOLERANCES UNLESS NOTED:		3RD ANGLE PROJECTION	
FRACTIONAL +/- 1/16			
DECIMAL +/- .030			
BREAK SHARP EDGES			

**PART NO. RGBHKIT14119.25**  
 RACK GROUND BAR

DRAWN BY:  
**EHS**  
 CHECKED BY:  
 DATE:  
111501



301 ZIEGLER DRIVE  
 GRAYSLAKE, IL 60030  
 (847) 548-8700

REVISION:  
E  
 SCALE:  
3/8  
 SHEET:  
1 OF 1