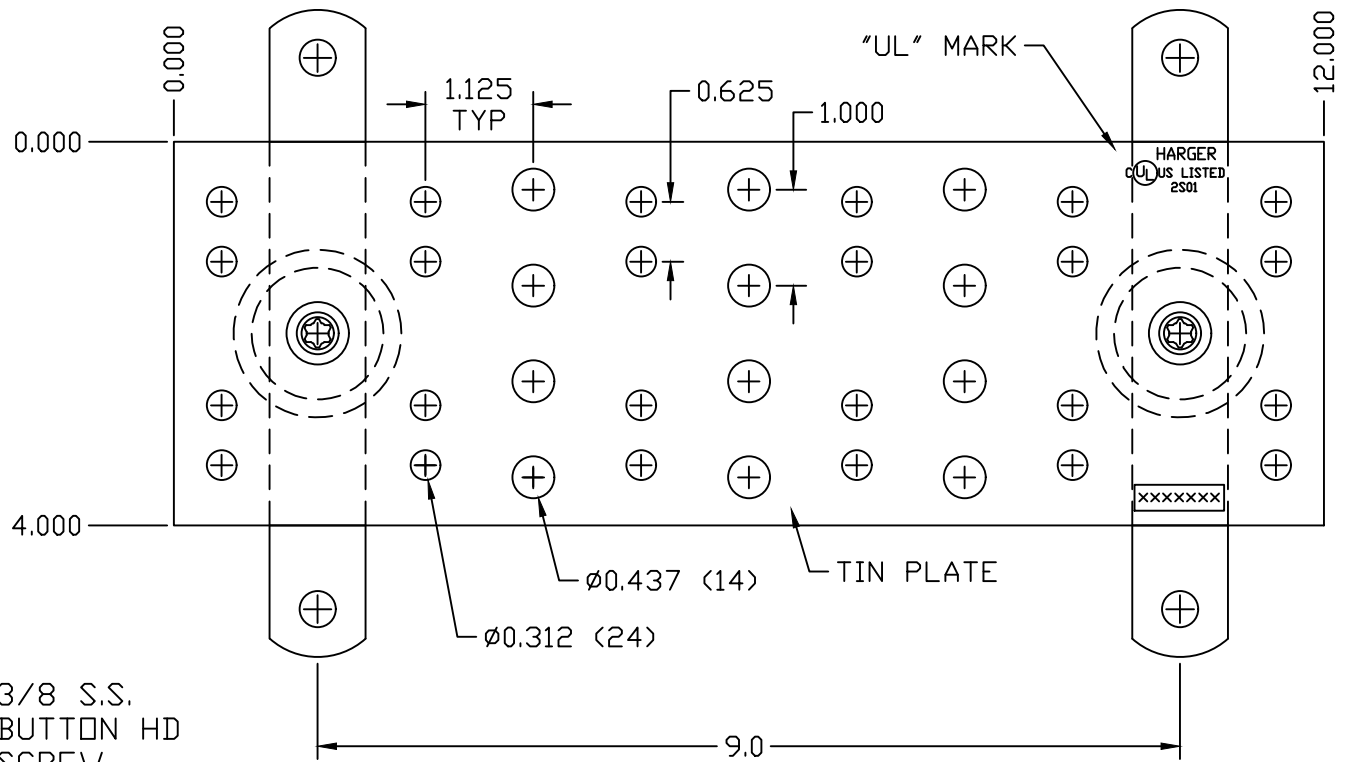
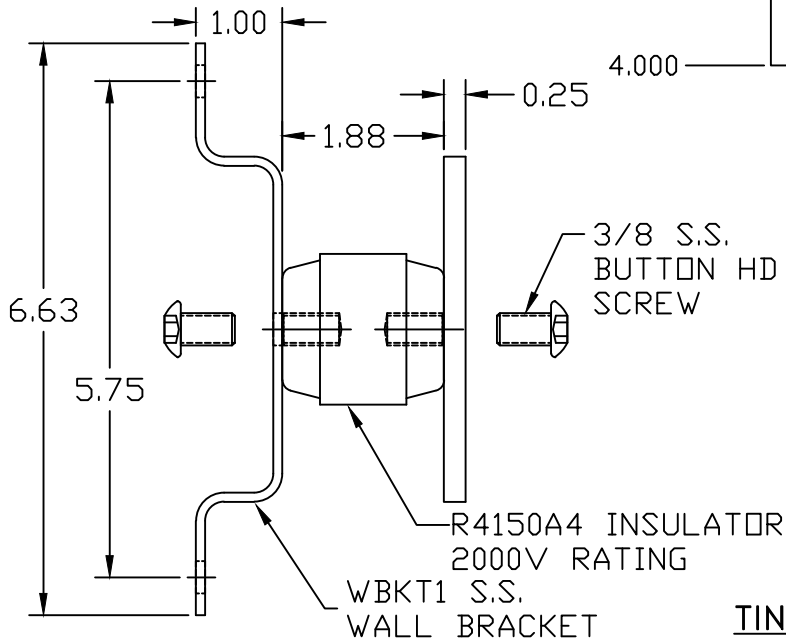


HCAJJC1/2



TINNED COPPER GROUND BAR ASSEMBLY

EST WT 4.7#

APPROVED

AS DRAWN: _____
 AS NOTED: _____
 DATE: _____

THIS DOCUMENT AND THE CONTENTS THEREOF IS THE PROPERTY OF HARGER INC., AND IS FURNISHED TO YOU FOR INFORMATION ONLY. THE INFORMATION CONTAINED HEREIN IS CONFIDENTIAL AND OF A PROPRIETARY NATURE AND MUST NOT BE DISCLOSED TO THIRD PARTIES WITHOUT THE EXPRESS WRITTEN APPROVAL OF HARGER INC.

C	WAS CS66S,LW6S,W6S	021508	DVB
B	REVISED PATTERN	112304	EHS
A	ADDED ANTIOXIDANT	100903	WSM
LET	REVISION	DATE	BY
TOLERANCES UNLESS NOTED:		3RD ANGLE PROJECTION	
FRACTIONAL +/- 1/16			
DECIMAL +/- .030			
BREAK SHARP EDGES			

PART NO. TGBI14412TMGB
 BICSI GROUND BAR ASSEMBLY

DRAWN BY: LAL
 CHECKED BY: _____
 DATE: 050901

HARGER™
 301 ZIEGLER DRIVE
 GRAYSLAKE, IL 60030
 (847) 548-8700

REVISION: C
 SCALE: 1/2
 SHEET: 1 OF 1