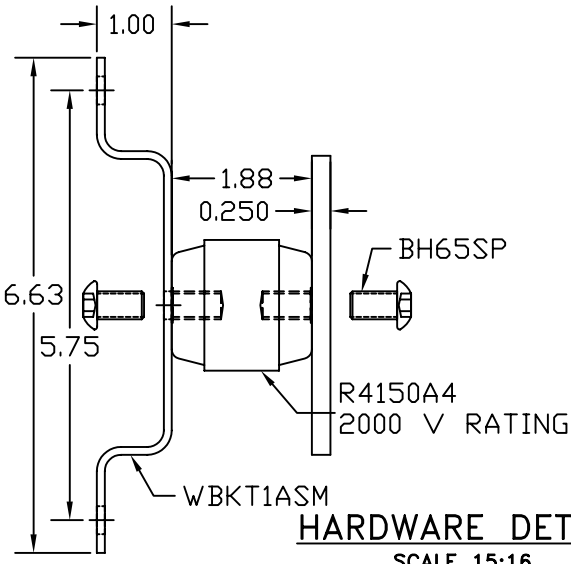


**TINNED GROUND BAR ASSEMBLY**



**HARDWARE DETAIL**

SCALE 15:16

EST WEIGHT 8.06 LBS

**APPROVED**

AS DRAWN: \_\_\_\_\_  
 AS NOTED: \_\_\_\_\_  
 DATE: \_\_\_\_\_

THIS DOCUMENT AND THE CONTENTS THEREOF IS THE PROPERTY OF HARGER INC., AND IS FURNISHED TO YOU FOR INFORMATION ONLY. THE INFORMATION CONTAINED HEREIN IS CONFIDENTIAL AND OF A PROPRIETARY NATURE AND MUST NOT BE DISCLOSED TO THIRD PARTIES WITHOUT THE EXPRESS WRITTEN APPROVAL OF HARGER INC.

A	BH65SP WAS LW6S, W6S, & CS66S	021108	DVB
LET	REVISION	DATE	BY
TOLERANCES UNLESS NOTED:		3RD ANGLE PROJECTION	
FRACTIONAL	+/- 1/16		
.00	+/- .030		
.000	+/- .010		

**PART NO. TGBI14424J**  
 TINNED CU GROUND BAR ASSEMBLY

DRAWN BY: KAB  
 CHECKED BY: \_\_\_\_\_  
 DATE: 080700



301 ZIEGLER DRIVE  
 GRAYSLAKE, IL 60030  
 (847) 548-8700

REVISION: A  
 SCALE: 13/32  
 SHEET: 1 OF 1