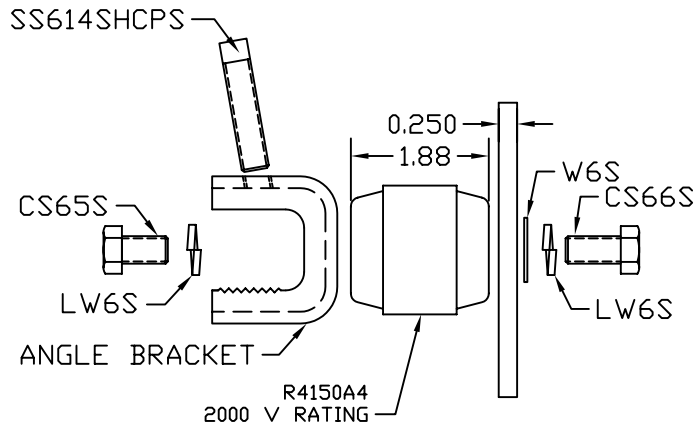


**TINNED GROUND BAR ASSEMBLY**



**HARDWARE DETAIL**

EST. WEIGHT 7.48 LBS

**APPROVED**

AS DRAWN: \_\_\_\_\_  
 AS NOTED: \_\_\_\_\_  
 DATE: \_\_\_\_\_

THIS DOCUMENT AND THE CONTENTS THEREOF IS THE PROPERTY OF HARGER INC., AND IS FURNISHED TO YOU FOR INFORMATION ONLY. THE INFORMATION CONTAINED HEREIN IS CONFIDENTIAL AND OF A PROPRIETARY NATURE AND MUST NOT BE DISCLOSED TO THIRD PARTIES WITHOUT THE EXPRESS WRITTEN APPROVAL OF HARGER INC.

A	WERE Ø3/8 X 5/8 SLOTS & Ø3/8 HOLES	021604	WSM
LET	REVISION	DATE	BY
TOLERANCES UNLESS NOTED:		3RD ANGLE PROJECTION	
FRACTIONAL	+/- 1/16		
.00	+/- .030		
.000	+/- .010		

**PART NO. TGBIA14424M**  
 TINNED CU GROUND BAR ASSEMBLY

DRAWN BY: EHS  
 CHECKED BY: -  
 DATE: 091202



301 ZIEGLER DRIVE  
 GRAYSLAKE, IL 60030  
 (847) 548-8700

REVISION: A  
 SCALE: 3/8  
 SHEET: 1 OF 1