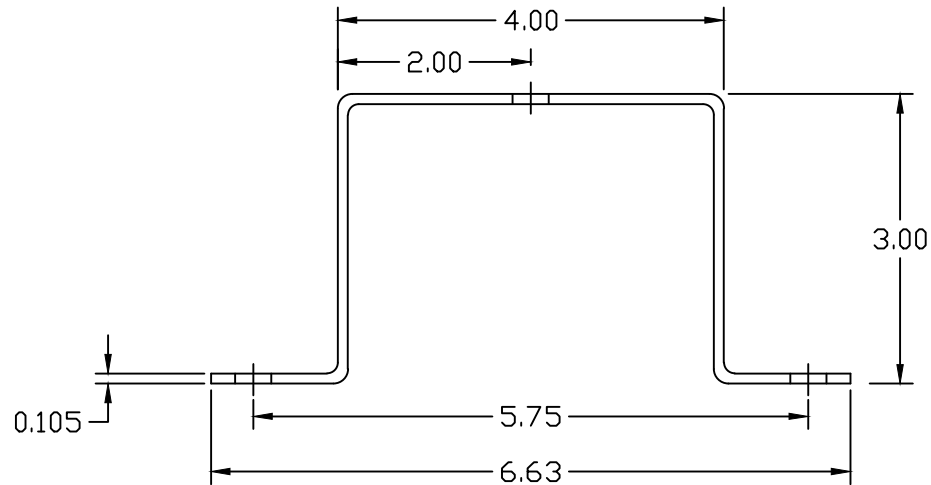


FLAT LAYOUT



STAINLESS STEEL WALL BRACKET

APPROVED

AS DRAWN: \_\_\_\_\_  
 AS NOTED: \_\_\_\_\_  
 DATE: \_\_\_\_\_

THIS DOCUMENT AND THE CONTENTS THEREOF IS THE PROPERTY OF HARGER INC., AND IS FURNISHED TO YOU FOR INFORMATION ONLY. THE INFORMATION CONTAINED HEREIN IS CONFIDENTIAL AND OF A PROPRIETARY NATURE AND MUST NOT BE DISCLOSED TO THIRD PARTIES WITHOUT THE EXPRESS WRITTEN APPROVAL OF HARGER INC.

LET	REVISION	DATE	BY

TOLERANCES UNLESS NOTED:  
 FRACTIONAL +/- 1/16  
 DECIMAL +/- .030  
 BREAK SHARP EDGES

PART NO. WBKT3  
 3" WALL BRACKET

DRAWN BY:  
 KAB  
 CHECKED BY:  
 DATE:  
 050800

**HARGER™**  
 301 ZIEGLER DRIVE  
 GRAYSLAKE, IL 60030  
 (847) 548-8700

REVISION:  
 -  
 SCALE:  
 1/2  
 SHEET:  
 1 OF 1